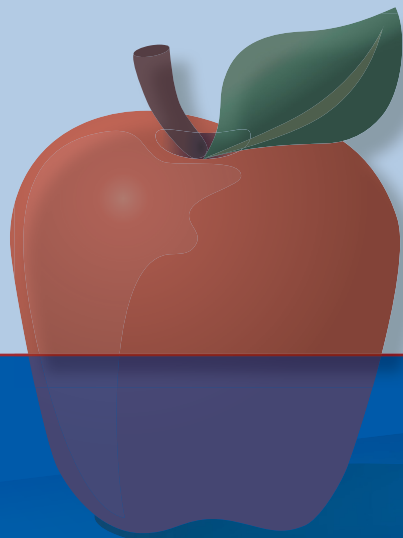


2011

HILLSBORO SCHOOL DISTRICT  
**ANNUAL REPORT**



## STRATEGIC FOCUS

### Mission

Engage and challenge all learners to ensure academic excellence.

### Objective

All students will graduate with college and career-readiness skills by reaching achievement benchmarks throughout their K-12 experience.

### Vision

Shared ownership, responsibility and commitment to success among all stakeholders.

### Strategies

Instruction  
Engagement  
Equity  
Facilities  
Safety

To view the complete Strategic Plan or for more information on any of our schools or other District data, please visit our website at [www.hsd.k12.or.us](http://www.hsd.k12.or.us).

## BOARD OF DIRECTORS



**Janeen Sollman**  
Board Chair  
Position 1



**Rebecca Lantz**  
Vice Chair  
Position 6



**Monte Akers**  
Position 3



**Adriana Cañas**  
Position 5



**Wayne Cliff**  
Position 7



**Carolyn Ortman**  
Position 2



**Kim Strelchun**  
Position 4

## SUPERINTENDENT



On behalf of the Hillsboro School District and its Board of Directors, I am pleased to share our Annual Report for 2011. The report is designed to provide an overview of the District's approach to education and the performance of both our students and schools—based on the most recent State Report Card and assessment data, as well as the federal Adequate Yearly Progress (AYP) Report.

This year has been one marked by excellent collaboration between all stakeholders: staff, students, parents, Board members, business leaders, and community patrons. Together, we crafted a new Strategic Plan for 2011-2016. The plan is clear and focused, and will serve as

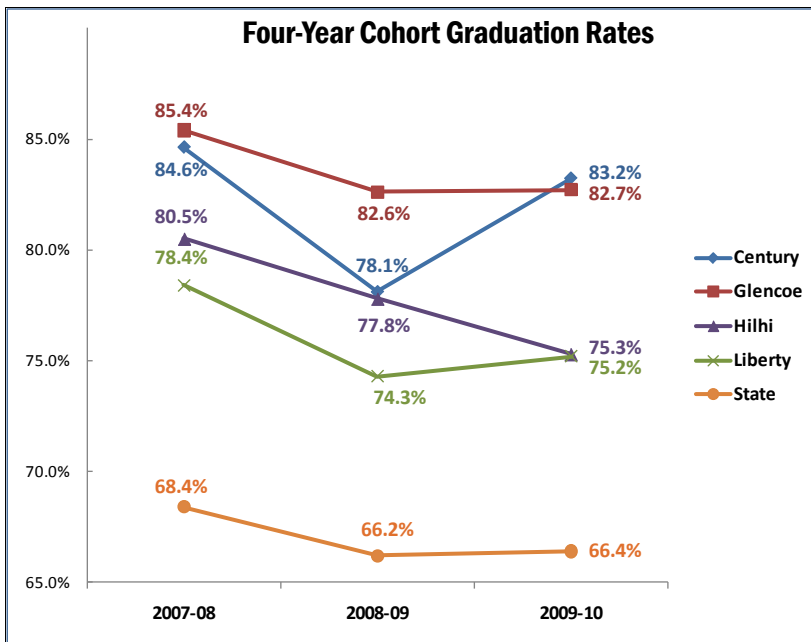
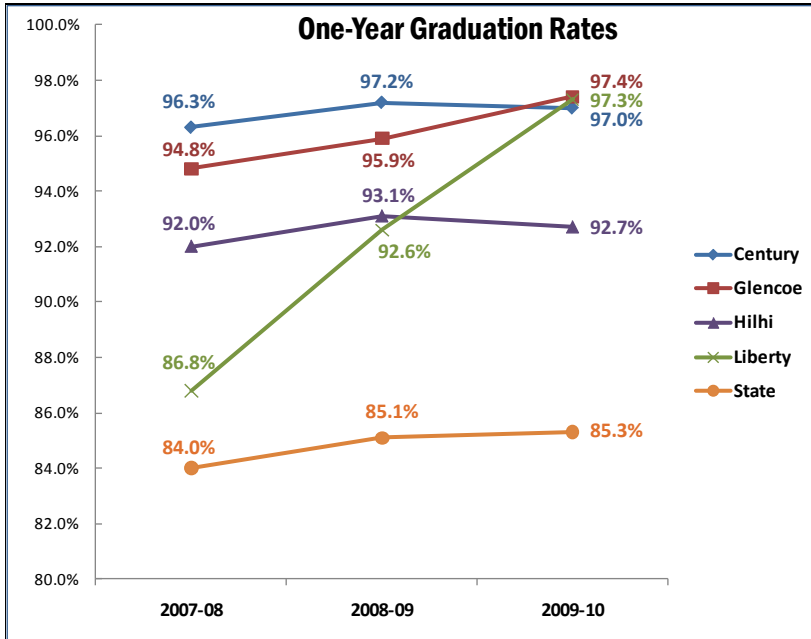
a roadmap to success—helping us align our efforts toward the common outcome of all students ultimately graduating with college and career-readiness skills. We also trimmed nearly \$19 million from our budget, but arrived at those reductions through a comprehensive, thoughtful process that involved opportunities for information sharing at each of our schools, at community listening sessions, and via our website.

We are continually reminded of the value of our many partnerships with volunteers, businesses, community and civic organizations, as well as city and county agencies. At all times, but especially when resources are scarce, these partnerships allow our District to provide the types of services and opportunities to students that make their educational experience rich and meaningful. Your feedback is important to us. Please review this report and contact us if you have any questions.

Sincerely,

Mike Scott, Superintendent

# DISTRICT AND STATE GRADUATION TRENDS



## Class of 2011 Highlights

Top graduates headed to the U.S. Naval Academy, Stanford, Drexel and Ohio State Universities, and even as far as the University of Regina in Canada, in addition to Oregon's outstanding state universities and colleges.

About three out of four graduates are pursuing post-high school education at two- and four-year colleges and universities. More than one out of four graduates earned Chancellor's Diplomas, earning automatic admission at any state university, and half earned certificates in focused areas of study.

## FAST FACTS

20,571

Student Enrollment  
*as of October 1, 2011*

2,457

District Employees  
*full- and part-time*

35

Schools

High Schools (9-12)	4
Middle Schools (7-8)	4
Alternative Center	2
Elementary (K-6)	25

## Demographic Data

2010-11	percent
White	53.1
Hispanic	33.1
Asian/Pacific Islander	7.0
Black	2.1
Native American	0.9
Multi-Ethnic	3.3

49.9

Percent of the District's students qualify for free/reduced-priced meals

# ACADEMICS & INSTRUCTION

Through the implementation of rigorous and research-based academic programs, the Hillsboro School District is committed to the continuous improvement of student opportunities and achievement. We are dedicated to using data on student performance to strengthen our instructional programs for all students while simultaneously closing achievement gaps. Some areas of focus continue to be:

## Literacy and Language

The District has implemented a K-12 Literacy Plan designed to support high levels of reading comprehension and writing performance for all students. Teachers carry out well-developed systems of instructional support for students at all levels and use data regularly to monitor the progress of all students and to provide the appropriate level and amount of instruction so students can reach their potential.

## Professional Learning Communities

Teacher collaboration time with a focus on student learning is a priority for the District. Teams of teachers regularly meet to clarify common learning targets (standards) for their students, develop common assessments to monitor student learning, and determine the best instructional practices to help students achieve high levels of learning.

This kind of collaboration ensures that all students have access to and opportunity for a rigorous curriculum and that teachers have the opportunity to share successful strategies and learn from each other.

## Mathematics

A District math study team established a mathematics teaching and learning plan that aligned to Oregon State Standards and will prepare students to meet college and career readiness benchmarks. The “Bridges in Mathematics” curriculum was adopted for K-5 classrooms in the spring of 2011 and was implemented this fall. An adoption for Grades 6-8 is planned for the 2012-13 school year, and the 9-12 adoption is slated for the 2013-14 school year.

Increasingly, students are asked to use math to reason, solve problems, analyze complex tasks, and to think critically. They are asked to justify and explain their thinking mathematically. The math study team continues to lead teachers in the development of instructional practices and in the use of materials that support students in these critical areas.

## Quality Assessment and Grading Practices

The District is committed to being data driven and this requires the use of quality assessment practices. The District has developed assessment leadership teams at each of our secondary schools in our effort to improve the quality of our assessments, the use of assessment results at both the classroom and the school level, and in the reporting of student progress and grading practices.

## State Report Card Ratings

All Oregon school districts and schools are evaluated annually by the Oregon Department of Education; and each receives a rating

of “Outstanding,” “Satisfactory” or “Needs Improvement,” based on student performance data. The state released 2010-11 school and district report cards in October 2011, which include the ratings as well as information on attendance rates, graduation rates, and student progress. Nine elementary schools received an outstanding rating, 15 received satisfactory ratings and one elementary was in need of improvement. All middle and three of four high schools received satisfactory ratings.

## Federal Ratings

The federal No Child Left Behind Act (NCLB) requires annual determination of whether schools, districts and states have made Adequate Yearly Progress (AYP) toward meeting academic standards.

Student performance is measured at the school and district level, and among student subgroup categories of race/ethnicity, students with disabilities, limited English-proficient, and economically disadvantaged. The federal AYP rating is based on two years of data, and the rating is either “Met” or “Not Met.” This year, schools had to have 70 percent of all students (in *all* sub-categories) meet or exceed standards to achieve the adequate yearly progress goal. The District received an overall Not Met status for AYP in 2010-11; however, 14 elementary schools and one of our high schools met the AYP goal.

## STUDENT PERFORMANCE

### 2010-11 State Report Card Highlights

31

Schools earned satisfactory or higher ratings

9

Elementary schools earned outstanding ratings

26

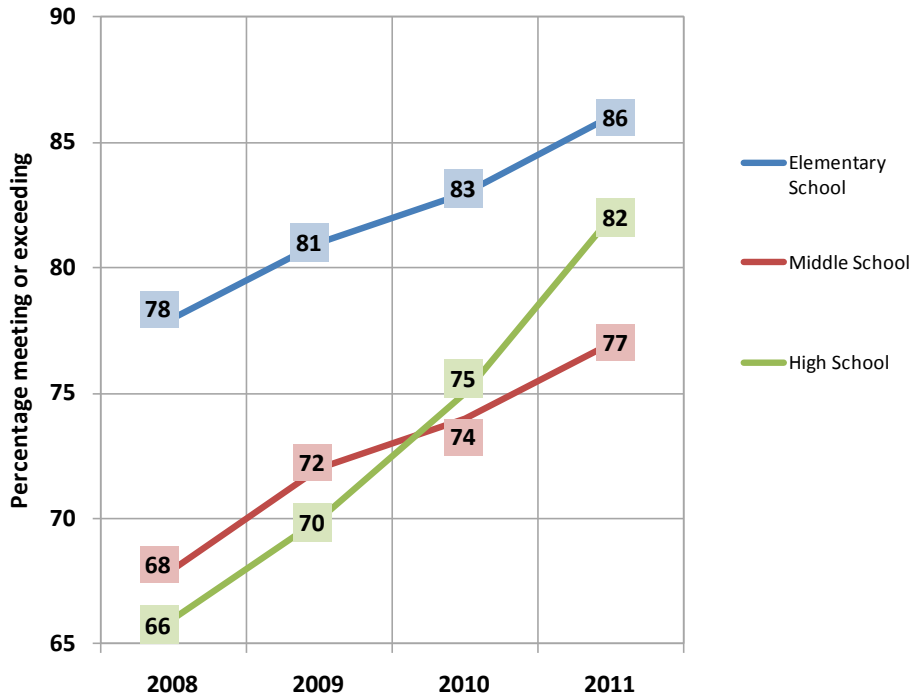
Schools improved reading scores

4

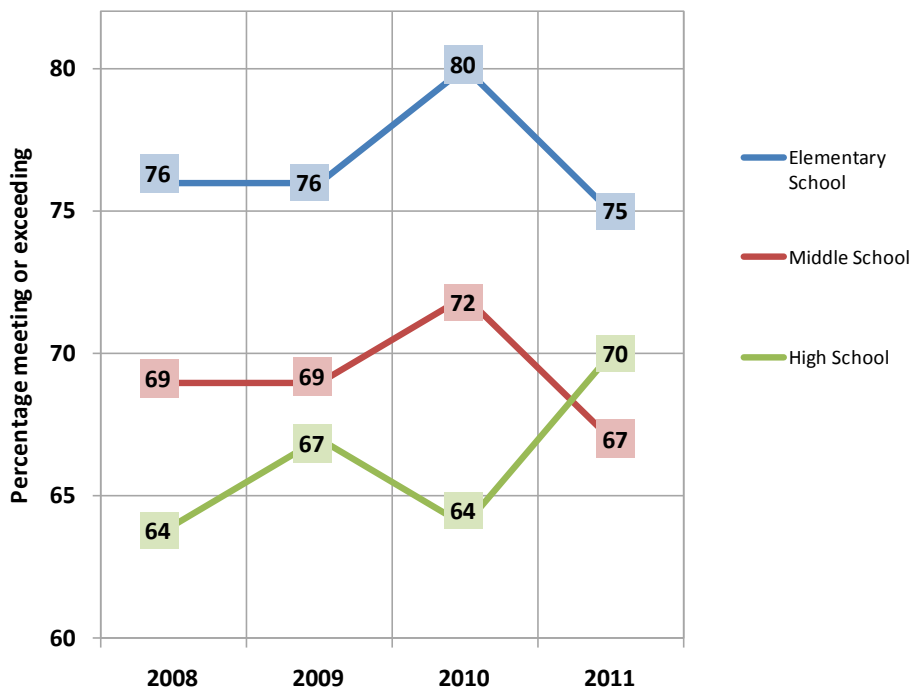
Schools improved math scores\*

\*State performance targets in math increased for the 2010-11 school year.

### Reading/Language Arts



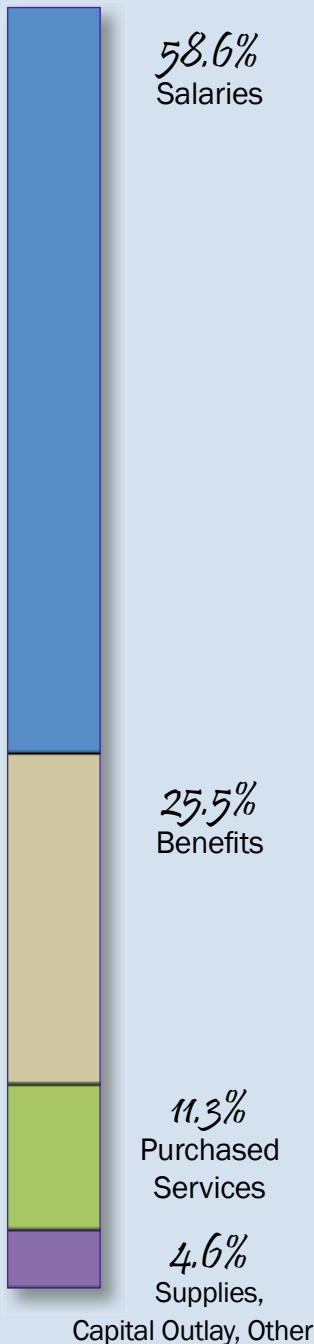
### Mathematics



## 2010-11 EXPENDITURES

*\$158 million*

Total Actual  
Expenditures



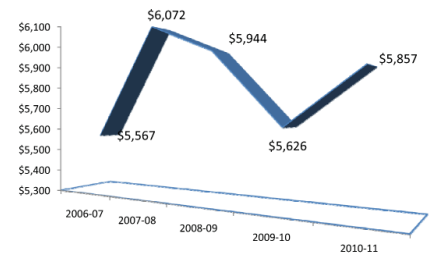
## FINANCIAL ACCOUNTABILITY

The funding for K-12 education, like that of every other organization receiving state money in Oregon, is determined on a biennial (every two years) basis. The 2011-2013 biennium, of which we are currently in the first year, continues the state's struggle with the economic downturn that began in the fall of 2008.

What this has meant to the Hillsboro School District, as well as districts around the state, is an extra measure of volatility in the budget. In the 2010-11 school year, the Hillsboro School District reduced its current service level (CSL) budget—what it would cost to operate at the same level as the prior year—by \$8.3 million. In order to meet this shortfall, the district reduced six days from its calendar, eliminated 21 full-time equivalent (FTE) staff and used \$2.5 million of reserves.

The 2011-12 school year saw a further \$18.9 million CSL budget reduction. This required the reduction of five calendar days and 112 FTE, \$1 million reduction in supply budgets, and the use of \$4.5 million in reserves. Licensed staff agreed to no cost-of-living increases, and movement of a step with payment of just a half step for this school year.

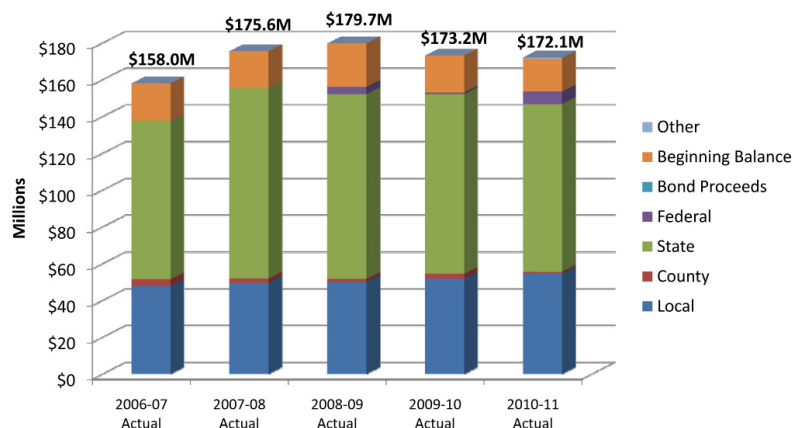
General Fund Revenues Per ADMw



As we look ahead to the second year of the 2011-2013 biennium and beyond, we see a continuing rise in Public Employees Retirement System (PERS) contribution rates, a loss of federal stimulus funds, and a decreasing percentage of the state's budget being allocated to K-12 education—at the same time our student population, their needs and graduation requirements increase. This prognosis, combined with very fragile state, national and international economies, may mean that the current budget situation may become the “new normal” for all school districts.

Collaboration, strategic problem-solving, and approaching our work differently will be required as we manage these financial constraints while continuing to provide the best possible education for all of our students.

Hillsboro School District General Fund  
5-Year Revenue Comparison



# OUR SCHOOLS

## High School Feeder Groups

Hillsboro's schools are organized into four feeder groups, each comprising one high school, one middle school and six to seven elementary schools, allowing for continuity and alignment of curriculum.

The District's four feeder groups are based on the District's four high schools: Century, Glencoe, Hilhi and Liberty. More information about the feeder groups and schools can be found on the following pages.



## Miller Education Center (MEC)

Principal: Stan Esselstrom

Miller Education Center (MEC) offers the majority of alternative education options for students in the Hillsboro School District. The center operates nine programs at five different sites.

MEC serves approximately 1,300 students annually through its comprehensive alternative education programs. Changes in the last year have provided MEC staff and students much-needed space to expand and serve the community in which they live.

MEC Middle and High Schools provide hands-on curriculum tailored to individual student needs. MEC also administers teen parent programs on-site as well as at Century and Glencoe High Schools.

The MEC Options site serves students in the Transition Options

Program (TOPS) for high school diploma credits and credit recovery, General Educational Development (GED) preparation, and Connect/Hillsboro In-School work readiness training programs.

MEC also offers educational services to adjudicated youth.

Admission to MEC programs is by application and counselor referral.

### MEC High School

Grades 9-12  
440 SE Oak Street, Hillsboro, OR 97123  
90-student capacity

### MEC Middle School

Grades 6-8  
440 SE Oak Street, Hillsboro, OR 97123  
30-student capacity

### MEC Options

High school credit and recovery, GED preparation, work readiness training  
215 SE 6th Avenue, Hillsboro, OR 97123

## ENROLLMENT BY FEEDER GROUP

5,258

Century Feeder Group

5,376

Glencoe Feeder Group

4,975

Hilhi Feeder Group

4,883

Liberty Feeder Group

79

Miller Education Center  
Middle and High Schools

*as of October 1, 2011*



## CENTURY FEEDER GROUP

### Century High School

Principal: Ted Zehr. Address: 2000 SE Century Boulevard, Hillsboro, OR 97123.  
 Year opened: 1997. Number of students: 1,696.  
 State Report Card: Satisfactory. Federal Rating (AYP): Met.

**Academic Programs**—Advanced Placement courses. Advancement Via Individual Determination (AVID). Seven focused programs tailored to student choice in specific career paths: Health Services; Focused Arts and Media Education (FAME); Business and Marketing; Culinary Arts; Technology; Human Resources—Early Childhood Education and Law; Education and Social Services.

**Sample extracurricular activities and clubs**—Wide variety of sports, Cheerleading, Dance Team, Band, Chorus, Drama, Speech, National Honor Society, Newspaper: JagWire, Yearbook, Model United Nations, Leadership.

### Brown Middle School

Principal: Don Brown. Address: 1505 SW Cornelius Pass Road, Hillsboro, OR 97123.  
 Year opened: 1963. Number of students: 843.  
 State Report Card: Satisfactory. Federal Rating (AYP): Not Met.

**Extracurricular activities and clubs**—The Zone intramural sports afterschool program, Homework Club and Math Center in cooperation with Hillsboro Parks and Recreation, Helping Empower Youth (HEY!) Leadership Club.

### Elementary Schools

#### Butternut Creek

Principal: Enedelia Schofield. Address: 20395 SW Florence Street, Aloha, OR 97007.  
 Year opened: 1977. Number of students: 421.  
 State Report Card: Satisfactory. Federal Rating (AYP): Not Met.

#### Imlay

Principal: Kona Williams. Address: 5900 SE Lois Street, Hillsboro, OR 97123.  
 Year opened: 2002. Number of students: 564.  
 State Report Card: Satisfactory. Federal Rating (AYP): Not Met.

#### Indian Hills

Principal: Bruce Bourget. Address: 21260 SW Rock Road, Aloha, OR 97006.  
 Year opened: 1979. Number of students: 447.  
 State Report Card: Outstanding. Federal Rating (AYP): Met.

#### Ladd Acres

Principal: David Cox. Address: 2425 SW Cornelius Pass Rd., Hillsboro, OR 97123.  
 Year opened: 1968. Number of students: 529.  
 State Report Card: Outstanding. Federal Rating (AYP): Met.

#### Reedville

Principal: Gina Baez. Address: 2695 SW 209th Avenue, Aloha, OR 97006.  
 Year opened: 1922. Number of students: 256.  
 State Report Card: In Need of Improvement. Federal Rating (AYP): Not Met.

#### Tobias

Principal: Steve Callaway. Address: 1065 SW 206th Avenue, Aloha, OR 97006.  
 Year opened: 1992. Number of students: 502.  
 State Report Card: Satisfactory. Federal Rating (AYP): Not Met.

## CENTURY FEEDER HIGHLIGHTS

### Graduates: 361

Valedictorians	8
Salutatorians	3
Chancellor's Diplomas	110

**Century's** softball team won the first ever state title for the school; and their Technology department is working with students to develop applications for mobile devices thanks to a \$20,000 Intel/Hillsboro Schools Foundation grant. The project involves students in the Business & Marketing, Health Services, and Technology classes.

**Brown Middle School** has taken a lead role in hosting parent/community information sessions on student safety topics like cyberbullying and drug awareness.

**Reedville Elementary School** and the OSU Extension staff coordinated with numerous community groups for September's Community Fair, including the Portland Junior League, Legacy Hospital, Tech Wizards, and more.

# GLENCOE FEEDER GROUP



## Glencoe High School

Principal: Robert Macauley  
Address: 2700 NW Glencoe Road, Hillsboro, OR 97124  
Year opened: 1980 Number of students: 1,647.  
State Report Card: In Need of Improvement. Federal Rating (AYP): Not Met.

**Academic Programs**—ASPIRE, Advanced Placement courses, Advancement Via Individual Determination (AVID). Project Lead the Way. Focused programs of study: Arts and Communication, Business and Management, Industrial and Engineering Systems, Human Resource Services, Health Services, Computer Sciences.

**Sample extracurricular activities and clubs**—Wide variety of sports, Cheerleading, Dance Team, Band, Colorguard, Drumline, Chorus, Drama, Speech and Debate, DECA, MEChA, Newspaper: Crimson Times, Yearbook, Key Club, National Honor Society, Leadership.

## Evergreen Middle School

Principal: Rian Petrick  
Address: 29850 NW Evergreen Rd., Hillsboro, OR 97124  
Year opened: 1981 Number of students: 808.  
State Report Card: Satisfactory. Federal Rating (AYP): Not Met.

**Extracurricular activities and clubs:** The Zone afterschool intramural sports programs, Team of Recreational Youth (TRY), Chess and Strategy Gaming Club, Modern Graphic T-shirt Design Club, Math Enrichment Tutoring Club, Homework Success Club, Total Body Conditioning Club, Glencoe Youth Dance, Photography Club, STEM Web Design Club, STEM Robotics Club, STEM Gamemaker Club, H.S. Student Mentoring Program, Helping Empower Youth (HEY!) Leadership Club, Fellowship of Christian Students Club, Adelante Chicas Club, Juggling Club, Model Car Club.

## Elementary Schools

### Free Orchards

Principal: Rebecca Brauer. Address: 2499 South Beech, Cornelius, OR 97113.  
Year opened: 2008. Number of students: 491.  
State Report Card: Satisfactory. Federal Rating (AYP): Not Met.

### Jackson

Principal: Jon Pede. Address: 675 NE Estate Drive, Hillsboro, OR 97124.  
Year opened: 1990. Number of students: 514.  
State Report Card: Outstanding. Federal Rating (AYP): Met.

### Lincoln Street

Principal: Jason Olson. Address: 801 NE Lincoln Street, Hillsboro, OR 97124.  
Year opened: 2008. Number of students: 580.  
State Report Card: Satisfactory. Federal Rating (AYP): Not Met.

### McKinney

Principal: Cecilia Murray. Address: 535 NW Darnielle Street, Hillsboro, OR 97124.  
Year opened: 1970. Number of students: 518.  
State Report Card: Satisfactory. Federal Rating (AYP): Met.

### North Plains

Principal: Craig Harlow. Address: 32030 NW North Avenue, North Plains, OR 97133.  
Year opened: 1954. Number of students: 291.  
State Report Card: Satisfactory. Federal Rating (AYP): Met.

### Patterson

Principal: Jonathan Pahukula. Address: 261 NE Lenox Street, Hillsboro, OR 97124.  
Year opened: 2000. Number of students: 527.  
State Report Card: Satisfactory. Federal Rating (AYP): Not Met.

## GLENCOE FEEDER HIGHLIGHTS

### Graduates: 357

Valedictorians	8
Salutatorians	4
Chancellor's Diplomas	82

**Glencoe's** theatre troupe won or placed in five of eight areas at the state thespian festival.

### Evergreen Middle

**School** celebrated its 30th anniversary by welcoming back former staff members to see how the school has changed and continues to improve over the years.

### Jackson Elementary

**School** became the first public K-12 school in the country to earn LEED:EBOM Gold certification for energy and water efficiency.

### Lincoln Street

**Elementary School** dedicated its school garden—the result of a Hillsboro Schools Foundation grant—in September by having students read poems and take home seeds to plant.



## HILHI FEEDER GROUP

### Hillsboro High School (Hilhi)

Principal: Matthew Smith. Address: 3285 SE Rood Bridge Road, Hillsboro, OR 97123. Year opened: 1969. Number of students: 1,476. State Report Card: Satisfactory. Federal Rating (AYP): Not Met.

**Academic Programs**—International Baccalaureate (IB) program featuring inquiry-based curriculum. Project Lead the Way. Robotics. Focused programs of study: Business, Sports Medicine, Early Childhood Education, Architecture, Industrial Design, Electronics, Horticulture and Natural Resources.

**Sample extracurricular activities and clubs**—Wide variety of sports, Cheerleading, Dance Team, Band, Chorus, Drama, Youth Senate, Key Club, Newspaper, Yearbook, Intel 4-H Tech Wizards, Leadership.

### South Meadows Middle School

Principal: Arturo Lomeli. Address: 4690 SE Davis Road, Hillsboro, OR 97123. Year opened: 2009. Number of students: 801. State Report Card: Satisfactory. Federal Rating (AYP): Not Met.

**Academic Integration**—IB Middle Years Program.

**Extracurricular activities and clubs**—The Zone afterschool enrichment classes and intramural sports programs and Team of Recreational Youth (TRY) in cooperation with Hillsboro Parks and Recreation, Drama Club, Chess Club, Hillsboro Weight Training Club, Homework Club, Math Hawks, MEChA, HEY! Leadership Club.

### Elementary Schools

#### Brookwood

Principal: Molly Siebert. Address: 3960 SE Cedar Street, Hillsboro, OR 97123. Year opened: 1953. Number of students: 420. State Report Card: Satisfactory. Federal Rating (AYP): Not Met.

#### Farmington View

Principal: Roger Will. Address: 8300 SW Hillsboro Highway, Hillsboro, OR 97123. Year opened: 1950. Number of students: 226. State Report Card: Outstanding. Federal Rating (AYP): Met.

#### Groner

Principal: Christie Petersen. Address: 23405 SW Scholls Ferry Rd., Hillsboro, OR 97123. Year opened: 1949. Number of students: 156. State Report Card: Satisfactory. Federal Rating (AYP): Met.

#### W. L. Henry

Principal: Alison Paulus. Address: 1060 SE 24th Avenue, Hillsboro, OR 97123. Year opened: 1968. Number of students: 498. State Report Card: Satisfactory. Federal Rating (AYP): Met.

#### Minter Bridge

Principal: Mary Mendez. Address: 1750 SE Jacquelin Drive, Hillsboro, OR 97123. Year opened: 1980. Number of students: 496. State Report Card: Outstanding. Federal Rating (AYP): Met.

#### Rosedale

Principal: Greg Zinn. Address: 3901 SW 229th Avenue, Hillsboro, OR 97123. Year opened: 2009. Number of students: 367. State Report Card: Satisfactory. Federal Rating (AYP): Met.

#### Witch Hazel

Principal: Grant Corliss. Address: 4950 SE Davis Road, Hillsboro, OR 97123. Year opened: 2003. Number of students: 535. State Report Card: Satisfactory. Federal Rating (AYP): Met.

## HILHI FEEDER HIGHLIGHTS

### Graduates: 321

Valedictorians	6
Salutatorians	1
Chancellor's Diplomas	90
International Baccalaureate Diplomas	22

**Hilhi** student Tori Graf won Best of Fair at the 2011 Beaverton-Hillsboro Science Fair and all-expenses-paid trip to the Intel International Science and Engineering Fair.

**South Meadows Middle School** was recognized as a Community School through the Washington County Commission on Children and Families and also earned ENERGY STAR status.

**Farmington View Elementary School** was named the 2011 Intel School of Distinction for elementary science education.

**W.L. Henry and Minter Bridge** Elementary Schools have strong and expanding Dual-Language programs.

# LIBERTY FEEDER GROUP

## Liberty High School

Principal: Gregg O'Mara. Address: 21945 NW Wagon Way, Hillsboro, OR 97124.

Year opened: 2003. Number of students: 1,389.

State Report Card: Satisfactory. Federal Rating (AYP): Not Met.

**Academic Programs**—Advanced Placement (AP) courses: Language and Composition, Literature and Composition, Calculus AB, Statistics, Computer Science, Music Theory, Studio Art, European History, U.S. History, Government/Advanced Economics Block, Spanish, Physics, Biology, Chemistry, Environmental Science. Dual Credit AP: Child Services, Culinary, Health Services and U.S. History through Portland Community College (PCC); Culinary also through Clackamas Community College. Academy structure: Freshman, Arts/Communication and Technology, Hospitality and Human Services. Educational access and retention programs: Project PLUS and Advancement Via Individual Determination (AVID). Senior Inquiry offering dual enrollment at Liberty and Portland State University. Fire Science.

**Sample extracurricular activities and clubs**—Wide variety of sports, Cheerleading, Dance Team, Band, Choir, Dressage, Colorguard, Equestrian, Thespian Club, Speech, FIRST LEGO Robotics Team, FIRST Tech Challenge Team, National Honor Society, Newspaper, Yearbook, Science Bowl and Science Olympiad, Leadership.

## Poynter Middle School

Principal: Greg Timmons. Address: 1535 NE Grant Street, Hillsboro, OR 97124.

Year opened: 1959. Number of students: 694.

State Report Card: Satisfactory. Federal Rating (AYP): Not Met.

**Extracurricular activities and clubs**—The Zone afterschool intramural sports programs and Team of Recreational Youth (TRY) in cooperation with Hillsboro Parks and Recreation, Drama Club.

## Elementary Schools

### Eastwood

Principal: Monique Monahan. Address: 2100 NE Lincoln Street, Hillsboro, OR 97124.

Year opened: 1978. Number of students: 494.

State Report Card: Satisfactory. Federal Rating (AYP): Not Met.

### Lenox

Principal: John Matsuo. Address: 21200 NW Rock Creek Blvd., Portland, OR 97229.

Year opened: 1978. Number of students: 443.

State Report Card: Outstanding. Federal Rating (AYP): Not Met.

### Mooberry

Principal: Brian Haats. Address: 1230 NE 10th Avenue, Hillsboro, OR 97124.

Year opened: 1963. Number of students: 485.

State Report Card: Satisfactory. Federal Rating (AYP): Met.

### Orengo

Principal: Tim Bishop. Address: 22550 NW Birch Street, Hillsboro, OR 97124.

Year opened: 2000. Number of students: 531.

State Report Card: Outstanding. Federal Rating (AYP): Met.

### Quatama

Principal: Janis Hill. Address: 6905 NE Campus Way, Hillsboro, OR 97124.

Year opened: 2008. Number of students: 543.

State Report Card: Satisfactory. Federal Rating (AYP): Not Met

### West Union

Principal: Ken McCoy. Address: 23870 NW West Union Road, Hillsboro, OR 97124.

Year opened: 1948. Number of students: 304.

State Report Card: Outstanding. Federal Rating (AYP): Met.



## LIBERTY FEEDER HIGHLIGHTS

### Graduates: 267

Valedictorians	11
Salutatorians	2
Chancellor's Diplomas	60

**Liberty's** Girls Multicultural Soccer Team won the 2011 state championship; and a team of culinary students took first place in the knife skills competition at the 2011 Oregon Pro Start High School Culinary Championships.

**Poynter Middle School's** drama troupe performed their *Princess Play* for residents at the ARC of Washington County in early June.

### Orengo Elementary

**School's** *Orca Live*—a student news program—delivered its 200th broadcast in April.

### Eastwood Elementary

**School** sixth-grader Krista Busby earned a \$20,000 grant to promote health and physical activity at her school through the Healthy Students, Healthy Oregon program.

## 2011 Annual Report

Published by the  
Communications Department  
Hillsboro School District  
Administration Center  
3083 NE 49th Place  
Hillsboro, OR 97124  
503.844.1500  
[www.hsd.k12.or.us](http://www.hsd.k12.or.us)