

HONORS CCP OVERVIEW

HONORS CCP REQUIREMENTS

Any 3 IB Classes

TOK 1 + TOK 2

Complete CAS

What's TOK?

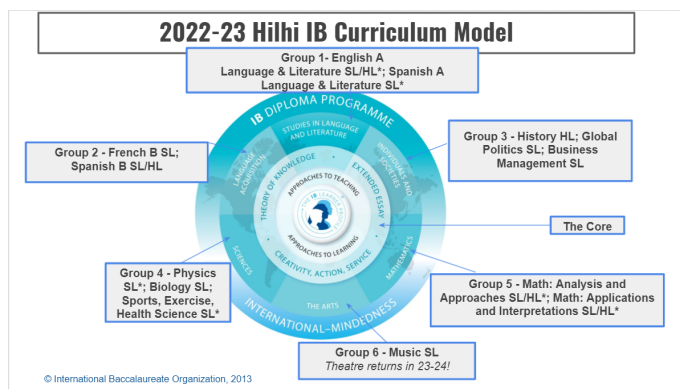
TOK stands for Theory of Knowledge. It is a two year elective that explores the nature and limitations of knowledge in various subject areas. This class also teaches research skills that support students' work in other IB DP courses and supports students toward completing CAS.

What's CAS?

CAS stands for Creativity, Activity, Service. Honors CCP students complete CAS service-learning experiences and a culminating 4-6 week project. CAS requirements are overseen by the CAS Coordinator and supported in the TOK course.

WORKSHEET for HONORS CCP

OVERVIEW	ADVANTAGES	ADVICE
Honors CCP students complete any combination of at least three IB DP courses during grades 11 and 12, the TOK course both years, and complete CAS.	Honors CCP students challenge themselves to take on rigorous, college-preparatory courses with an exciting, inquiry-driven curriculum. While there is no requirement of Honors CCP students to take formal IB exams, they are certainly encouraged to test so they can earn college credit for their work.	Many students have interests in more than one CCP, and many students pair the Honors CCP up with one or two other pathways. If you do this, make sure you make your IB classes the same as your other CCP capstone classes!



MY HONORS CCP PLAN!	
11th Grade	12th Grade
TOK	TOK

Hilhi IB Diploma Program **OVERVIEW**



OVERVIEW: The [International Baccalaureate Diploma Programme](#) is a highly rigorous and globally recognized college preparatory curriculum designed for high school students in grades 11 and 12. Students who choose to pursue the IB Diploma are choosing to prepare themselves exceptionally for the academic challenges that await after high school. Diploma Candidates are supported through the program by the IB Coordinator, CAS Coordinator, and a dedicated group of IB-trained teachers and counselors. The IB Diploma Programme is demanding, achievable, and worth it.

IB DIPLOMA OPTIONS + REQUIREMENTS

OPTION 1:

**3 HL Classes
 3 SL Classes**

**Extended Essay
 TOK + CAS**

OPTION 2:

**4 HL Classes
 2 SL Classes**

**Extended Essay
 TOK + CAS**

What's TOK?
 TOK stands for Theory of Knowledge. It is a two year elective that explores the nature and limitations of knowledge in various subject areas. This class also teaches the research skills needed to complete the Extended Essay and supports students toward completing CAS.

What's CAS?
 CAS stands for Creativity, Activity, Service. IB Diploma Candidates complete CAS service-learning experiences and a culminating 4-6 week project. CAS requirements are overseen by the CAS Coordinator and supported in the TOK course.

Extended Essay?
 The Extended Essay (EE) is a 4,000 words college-level research essay completed by IB Diploma Candidates. It represents approximately 40 hours of work and is completed on a topic of the candidate's choosing. The EE is supported in the TOK course and by a teacher-advisor.

WORKSHEET for IB DIPLOMA

OVERVIEW	ADVANTAGES	ADVICE
DP Candidates complete and sit for exams in 3 HL courses and 3 SL courses over the junior and seniors years. Some candidates choose to take 4 HL and 2 SL courses, which is allowed but not necessarily advised. Each one of these courses must come from a separate group with the exception of The Arts (see below). Additionally, DP Candidates must complete the "IB Core" of TOK, CAS, and the EE.	DP Candidates will have completed the most rigorous course of study available, will be incredibly attractive to universities, AND will be fully prepared for collegiate success. Also, if a DP Candidate earns a score of 30 or higher on their combined diploma components, they will enter all Oregon state universities with sophomore standing and an automatic \$3,000/year renewable academic scholarship.	The IB Diploma is a serious academic commitment. DP Candidates will have a significant amount of work to complete both in and outside of school, but will certainly emerge ready to tackle post-secondary studies. Prospective students should make sure to talk the decision over with their families, current DP Candidates, and be ready to work hard!

DIPLOMA PROGRAM COURSE FLOW CHART

Mandatory to CHOOSE ONE class from each Group 1-5

CHOOSE ONE or REPLACE with another class from Groups 2, 3, or 4

ALL are Mandatory

Studies in Language and Literature (Group 1)	Language Acquisition (Group 2)	Individuals and Societies (Group 3)	Sciences (Group 4)	Mathematics (Group 5)	The Arts (Group 6)	The Core
HL English Lang + Lit	HL Spanish B	HL History of the Americas	HL2 Biology (<i>last offering 22-23</i>)	HL Mathematics: Analysis + Approaches (AA)	SL Music (1 yr)	Theory of Knowledge (2 yr)
SL English Lang + Lit (2 yr)	SL Spanish B (1 yr)	SL Global Politics (1 yr)	SL Biology (1 yr)	SL Mathematics: AA (2 yr)	<i>Theater returns 23-24</i>	Extended Essay
SL Spanish Lang + Lit (2 yr)	SL French B (1 yr)	SL Business Management (1 yr)	SL Physics (2 yr)	HL Mathematics: Applications + Interpretation (AI)		CAS
			SL Sports, Health, and Exercise Science (2 yrs)	SL Mathematics: AI (2 yr)		

SAMPLE DP CANDIDATE SCHEDULE		MY DIPLOMA PLAN!	
11th Grade	12th Grade	11th Grade	12th Grade
HL 1 Lang + Lit	HL 2 Lang + Lit	HL 1	HL 2
HL 1 Spanish B	HL 2 Spanish B	HL 1	HL 2
HL 1 Math: AA (2 yr)	HL 2 Math: AA (2 yr)	HL 1	HL 2
SL Biology (1 yr)		SL	SL
SL Global Politics (1 yr)	SL Music (1 yr)	SL	SL
TOK 1	TOK 2	TOK 1	SL
End of Year Exams: Global Politics, Bio	End of Year Exams: Lang + Lit, Spanish B, Math, Music	Max 2 SL Courses Allowed Junior Year; 3 HL Courses Mandatory	TOK 2

