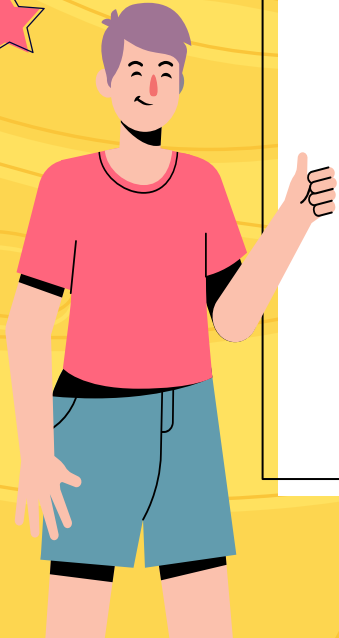
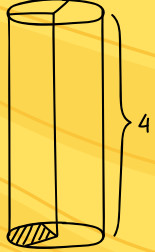


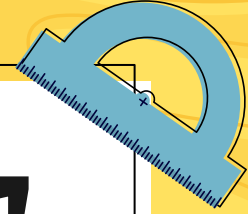
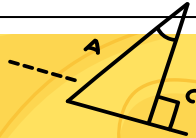
$$x_2^4 + x_3^2 = (x_2 + x_3)^2$$



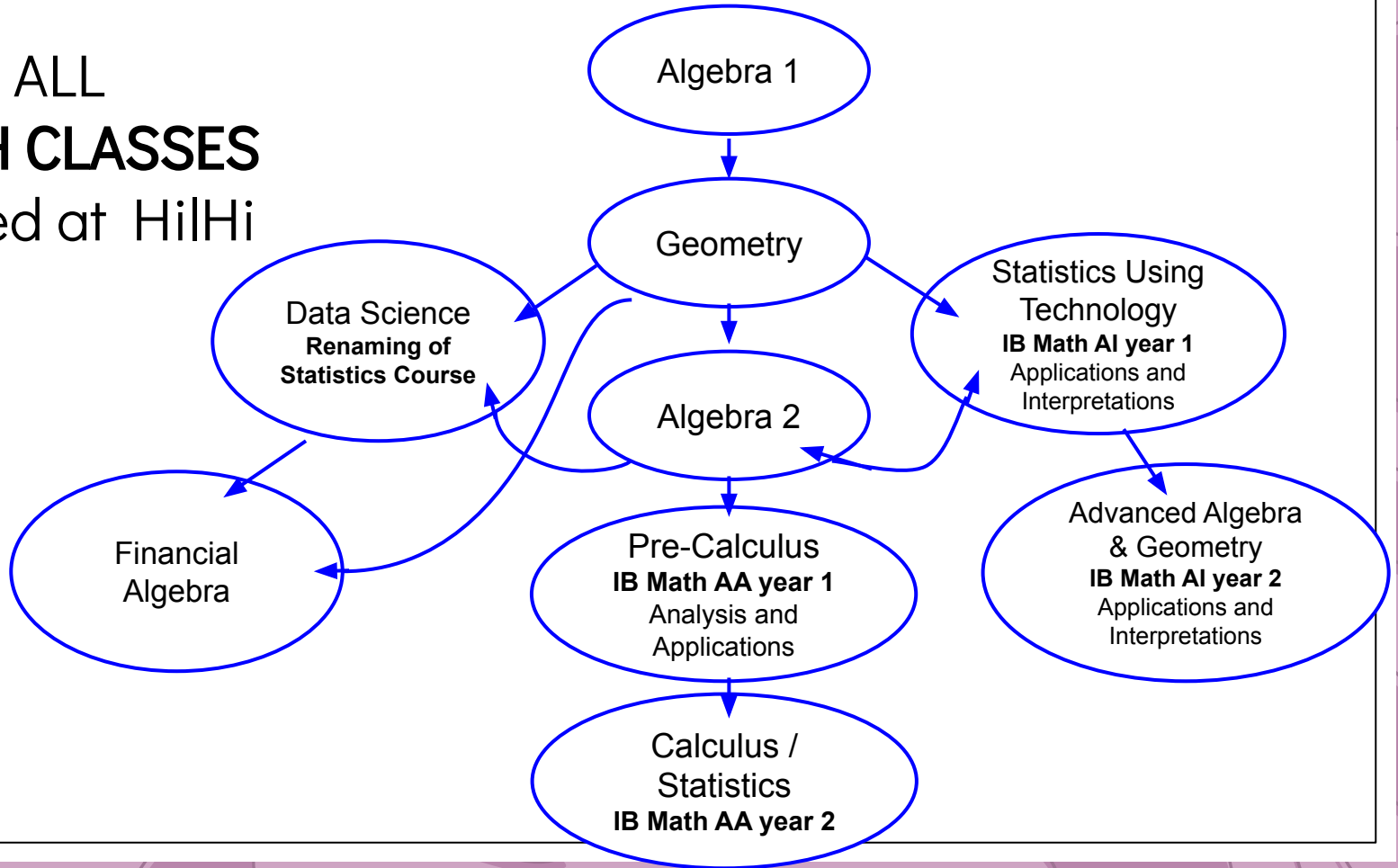
# MATH FORECASTING

## WHICH CLASS COMES NEXT?

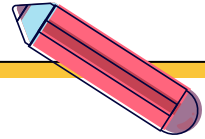
REFLECT ON YOUR EXPERIENCE AND GOALS TO DETERMINE  
CLASS WOULD BE **BEST FOR YOU.**



ALL  
**MATH CLASSES**  
offered at HilHi



# MATH REQUIREMENTS: WHAT YOU NEED TO KNOW

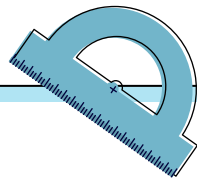


- ★ Passing 3 years of math is required to graduate!
- ★ 4 years of math is recommended for anyone planning on attending a 4 year university or completing the Chancellor's Diploma.
- ★ BOTH Data Science (We are RENAMING our statistics class. Mostly the same, but with an emphasis on interpretation) and Financial Algebra are applied math classes. Their content is helpful for ANY future endeavor. AND you can take these classes in addition to another math course.

$$\sin^2 + 2 \cos$$



# MY FUTURE PLANS



1

GO STRAIGHT INTO THE **WORKFORCE**

2

**TRADE SCHOOL**

3

**MILITARY**

4

**COMMUNITY COLLEGE**

5

**4 YEAR UNIVERSITY**

## WHEN DO I HAVE TO TAKE A MATH PLACEMENT TEST?

All of these options involve a **math placement test** OR **course requirement**.

EX: Military (depending on branch) you take the ASVAB test. Your performance on this determines which jobs you qualify for.

EX: Community College (PCC) gives the ALEKS test. This test can be taken online at home as soon as you are accepted and this test will determine which math class you start with.

\*\* All Oregon universities use the ALEKS test

# PLACEMENT TESTS: Community College OR 4 Year University

## ALEKS Test Placement

Can be taken at home or testing center as soon as you have acceptance code.

You may retake up to 3 times.

Your score determines which math class you START in.

Here are the options

MATH 65 ~ Algebra 1  
Math 95 ~ Algebra 2 light

Math 101 / Math 103 ~  
Mathematical Modeling

Math 105 ~ Commonly  
required math core class

MATH 111 ~ PreCalculus  
Math 112 ~ PreCalculus

### Non-accredited classes.

These classes do NOT earn you credit but you need to take, pass, and pay for!

### NEW OPTION: Elective Credit

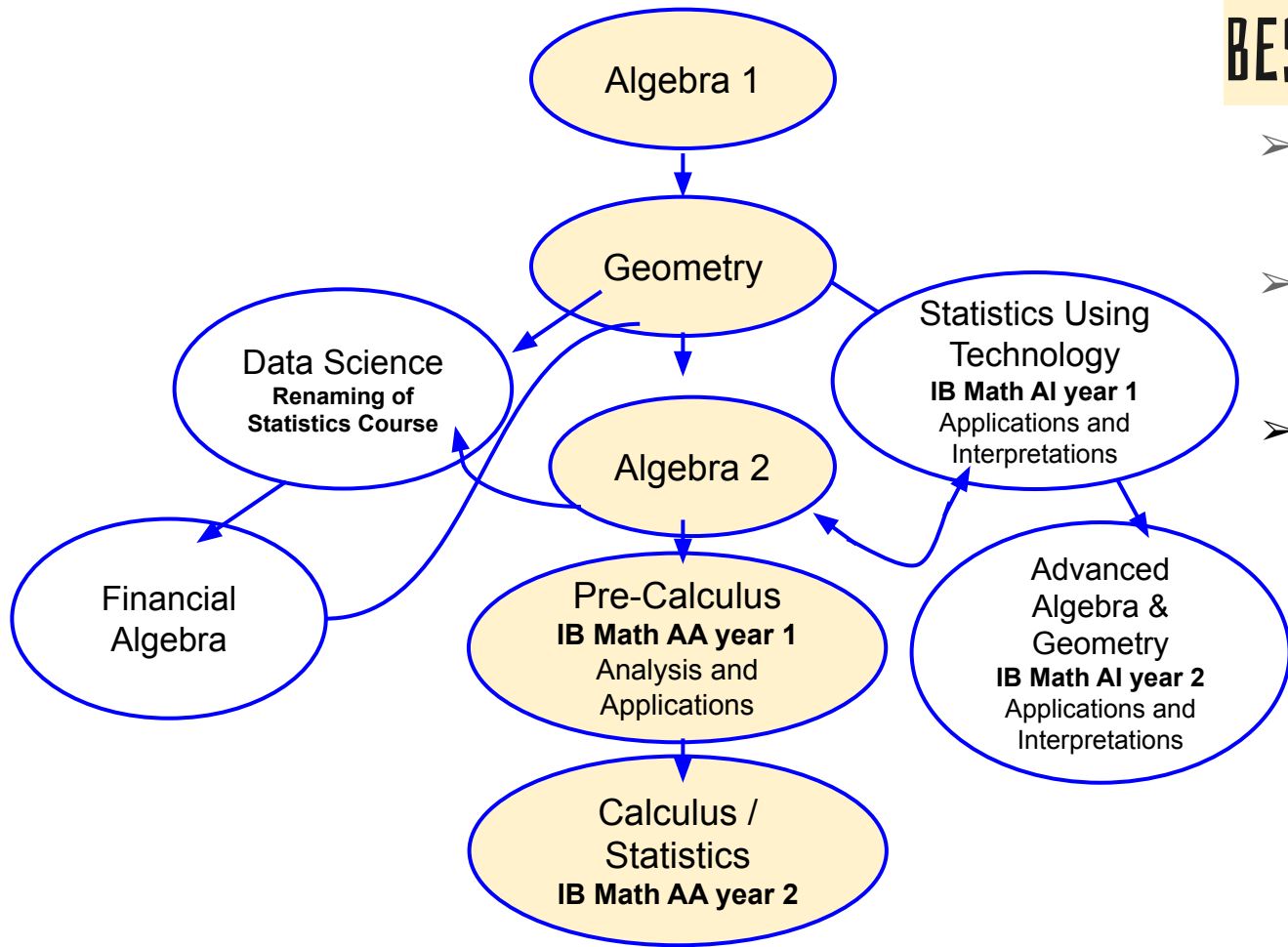
Class name depends on university.  
Entry level course that gives you ELECTIVE credit.

Our goal is to have you enter here!

Meet your core requirement without paying for extra classes.

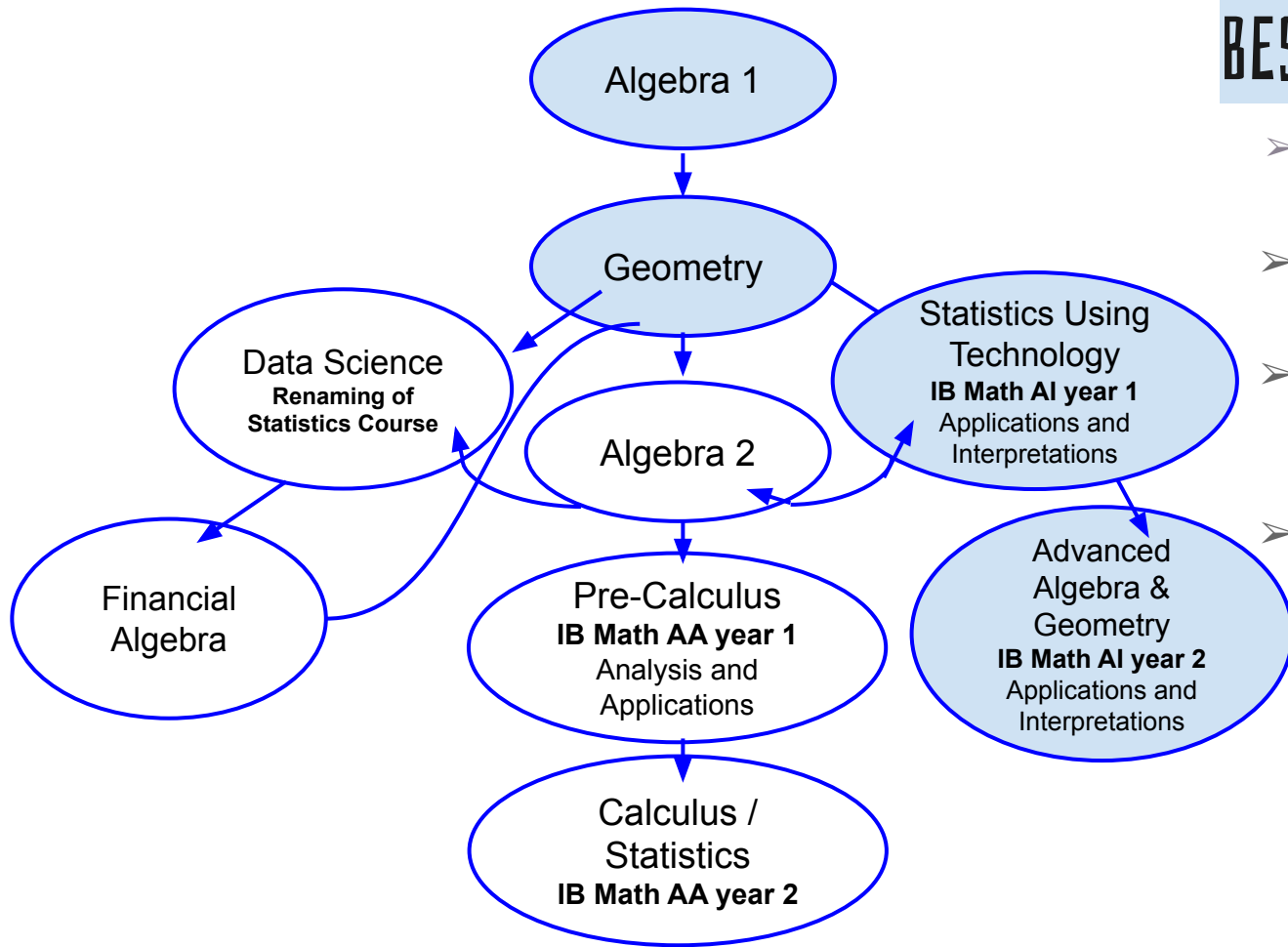
Depending on major you might be required to take these courses.

MTH 95 OR Algebra 2 is prerequisite course



## BEST PATH FOR YOU IF...

- Interested in attending a 4 year university.
- You are interested in math and/or science.
- College credit after year 2, depending on your IB score, is awarded.



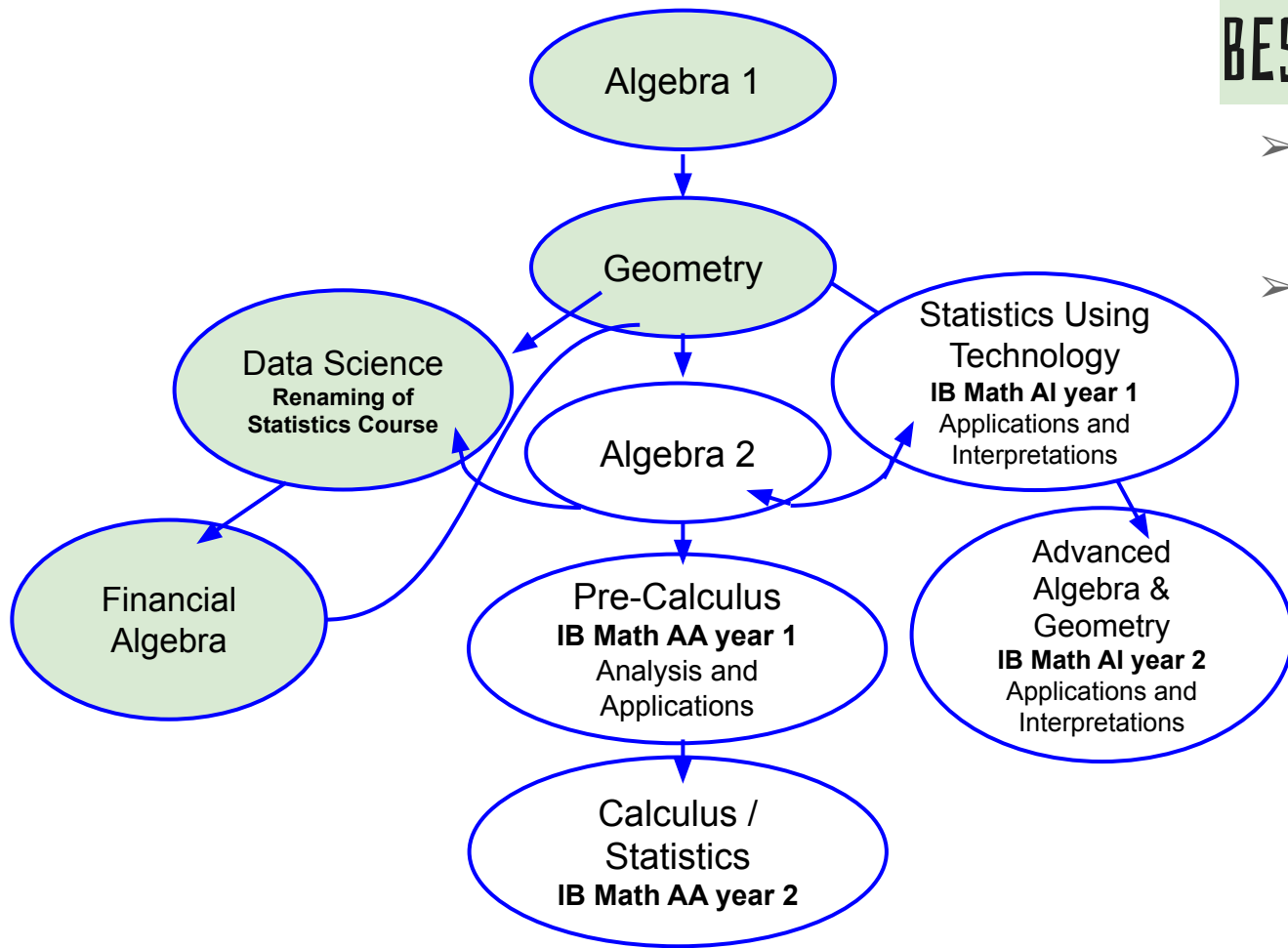
## BEST PATH FOR YOU IF...

- Interested in attending a 4 year university.
- Not interested in pursuing math or science.
- IB AI Year 1 can be taken before or after Algebra 2 as a 4<sup>th</sup> year math course.
- Any sophomore in Geometry interested in Full IB Diploma OR IB Honors.

## BEST PATH FOR YOU IF...

- Traditional math classes are not working for you.
- Going straight into the workforce, or starting at a community college.

*Note: SOME Trade schools are looking for Algebra 2 to be on your transcript. See our college and career center for help with your specific goals.*





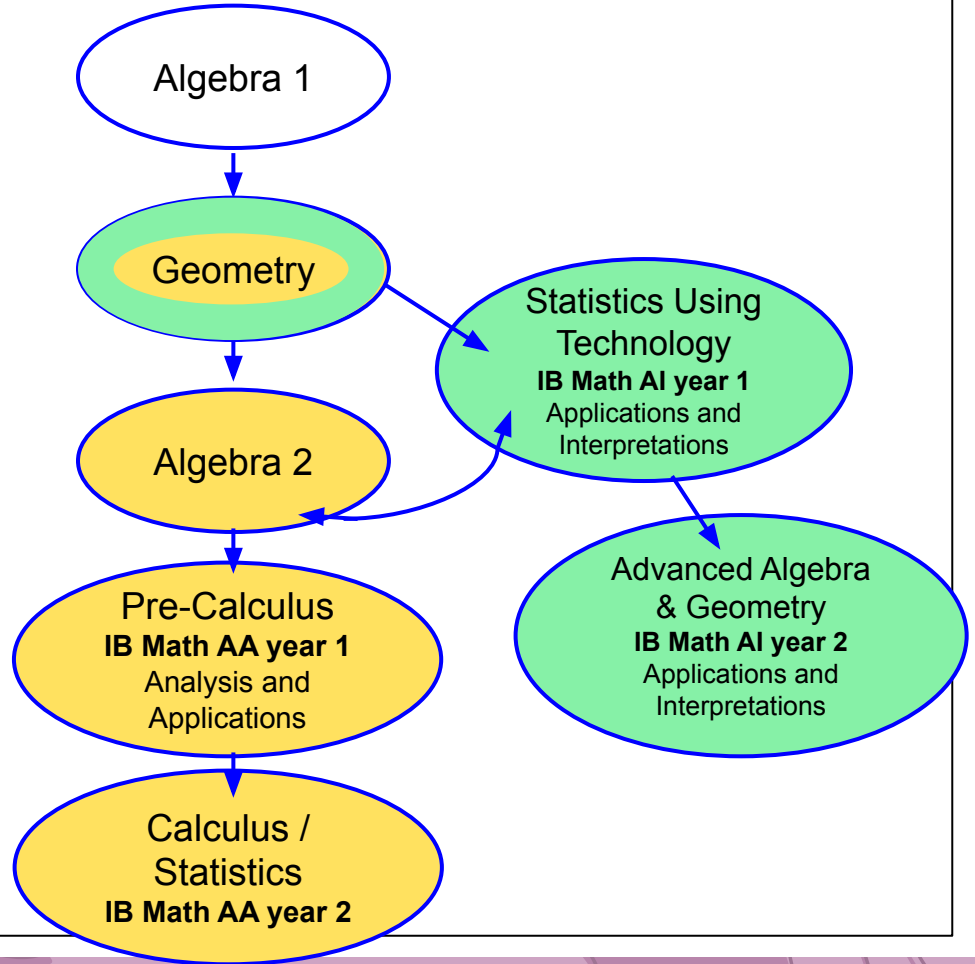
# IB Diploma?

**Option 1:** Geometry + Algebra 2  
TWO classes 10th grade

**OR**

**Option 2:** Geometry then IB AI

If you are in Algebra 1 in 9th grade  
AND interested in Math / Science /  
Engineering career **PLUS** IB diploma  
you will need to **double up in Math**  
your 10th grade year.

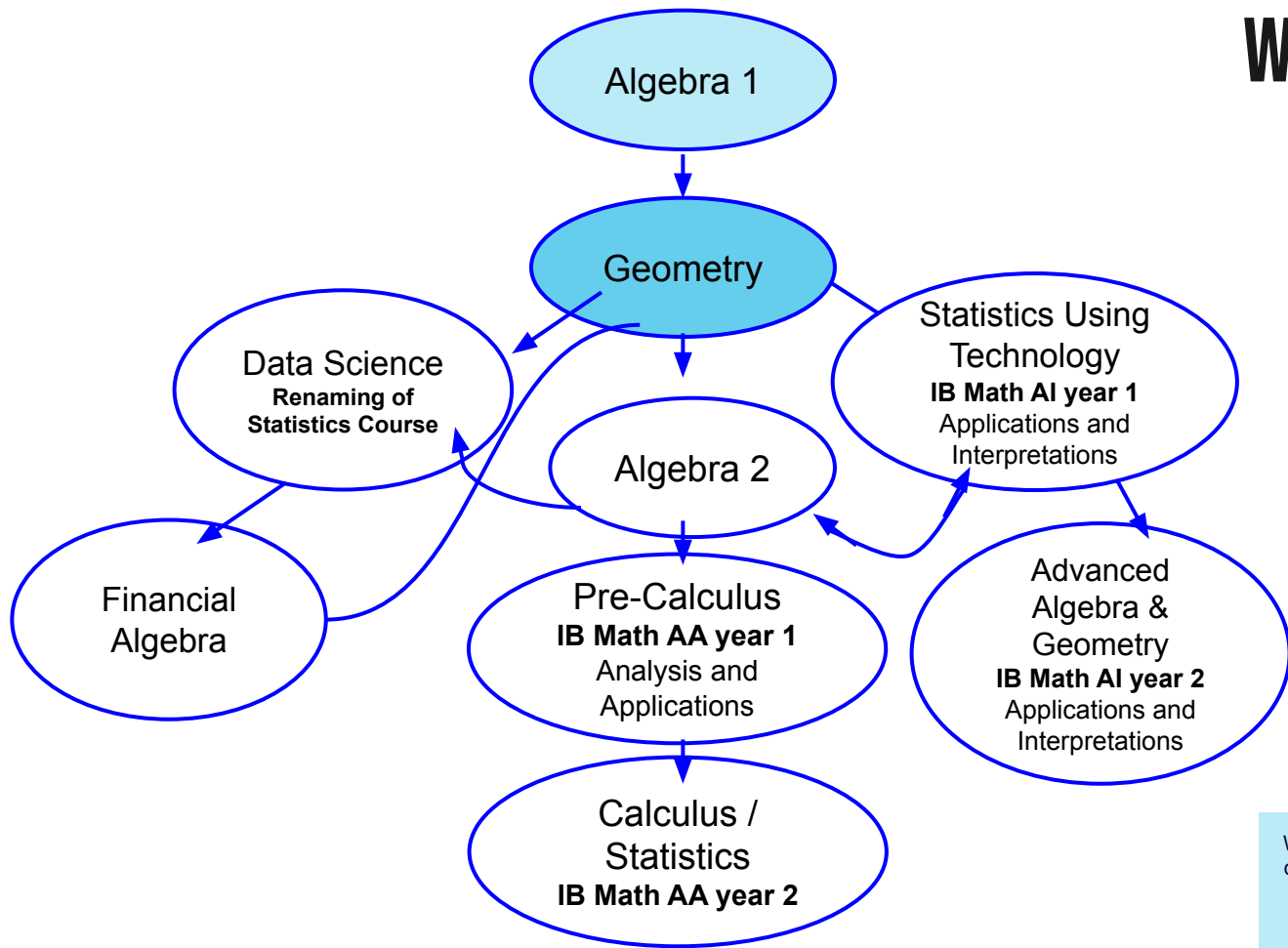


# MATH FORECASTING QUESTIONS?

You will forecast for math with your current math teacher.

# WHAT'S NEXT FOR ME?

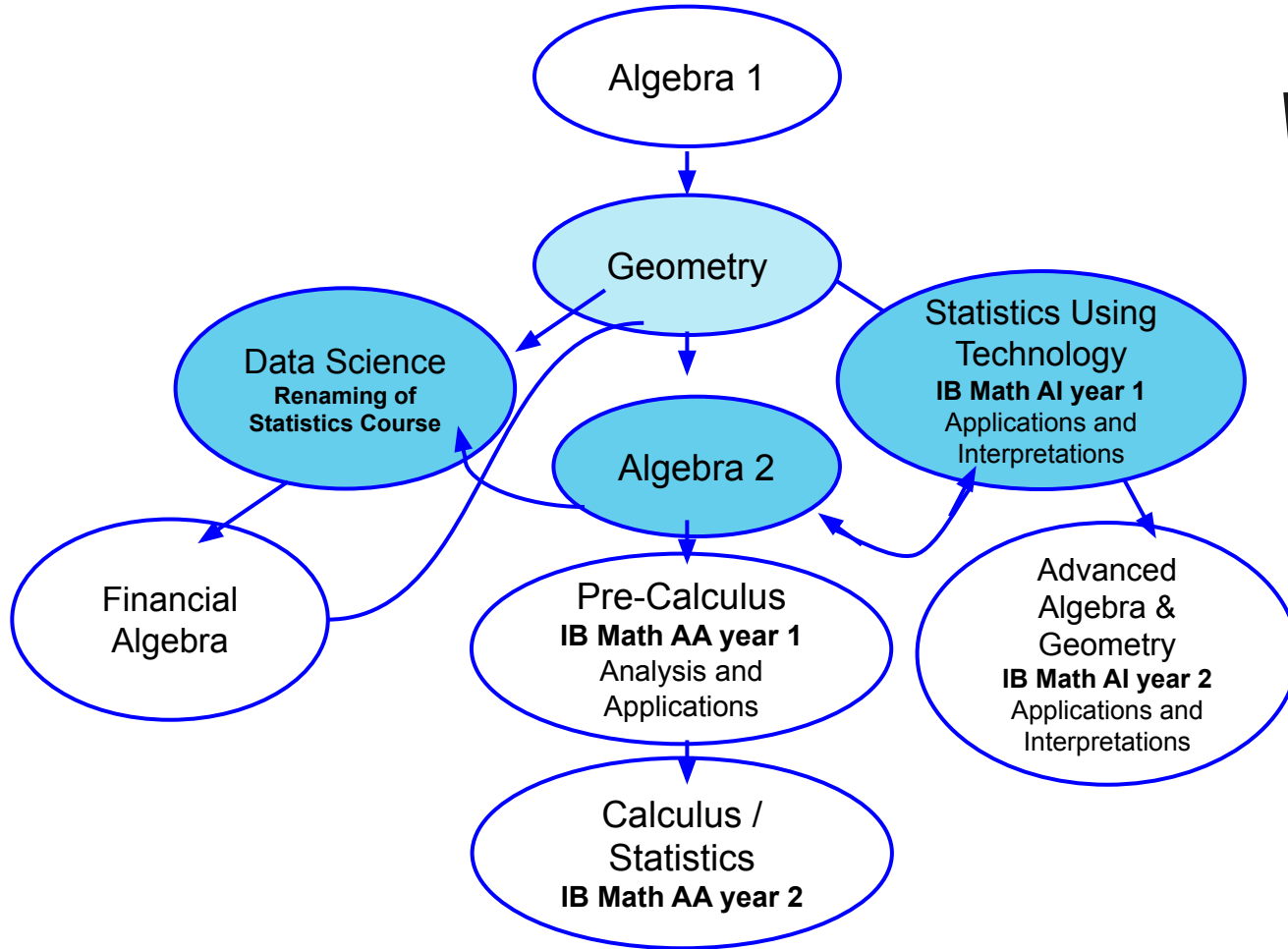
## CURRENTLY IN **ALGEBRA 1**



With your Algebra 1 teacher's approval, you can double up and take both Geometry and Algebra 2. This would be for anyone really interested in math and/or IB diploma.

# WHAT'S NEXT FOR ME?

## CURRENTLY IN GEOMETRY



# WHAT'S NEXT FOR ME?

## CURRENTLY IN ALGEBRA 2

